

# KSC ControlRoom

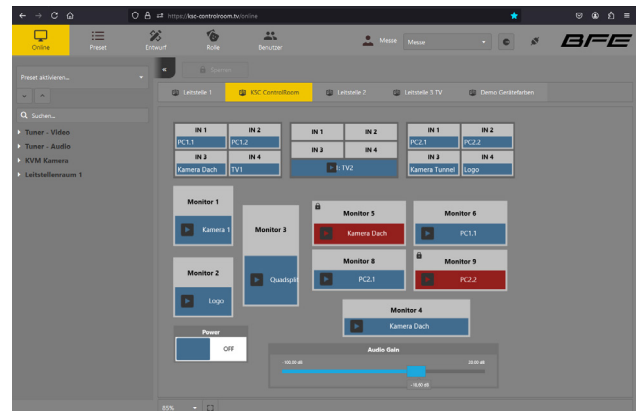
Control and management system for situation rooms and control rooms



**KSC ControlRoom** is an intuitive management system for all control jobs within situation rooms, emergency services, industry and control room environments. Centralizing all command functionalities, ranging from allocating of monitors and media control to controlling room equipment simplifies daily operation and supports your staff even in critical situations.

**KSC ControlRoom** can integrate equipment of any manufacturer. The modular system is scalable to fit any project size and is ideal for reliable use in 24/7 environments.

- Manufacturer agnostic control- and management system
- Intuitive user interface
- Control of video walls
- Situation dependent control of integrated systems
- Triggering of presets with the push of a button
- Scalable through modular system design



Situation-dependent control of all media technology equipment as well as automated control of room equipment are the basis for efficiently running operations in control and situation rooms, whether you are in the security, emergency or industry sector.

As an umbrella control and management system, **KSC ControlRoom** is the ideal interface between staff and equipment.

Main task of **KSC ControlRoom** is the control of screens and video walls, the preparation and targeted distribution of audio/video signals (DVI, HDMI, HD-SDI, H.264, etc.), as well as the control of room equipment such as lights, blinds and other workstation settings.

**KSC ControlRoom** offers an intuitive, touch-enabled graphical user interface for PC and Mac. Access control is achieved with user profiles and role-based authorization concept. Optionally available control panels with LCD buttons and situation-dependent button labeling, as well as the use of tablet computers, allow for the use of presets to control complex tasks with the touch of a button in the browser.

**KSC ControlRoom** is a modular Software which adapts to the requirements of the specific situation. A wide range of management and automation functions are available to make the daily operation of complex control room technology easy and safe.

**KSC ControlRoom** is available as a web-based HTML5 version.

Equipment can be integrated into **KSC ControlRoom** via all common interfaces, ranging from IP and serial 232/485 to GPIO contacts.

The software has already proven its performance and reliability in the media and broadcast environment as well as several other 24/7 system environments across industries with 900 installations worldwide.

## Key Features

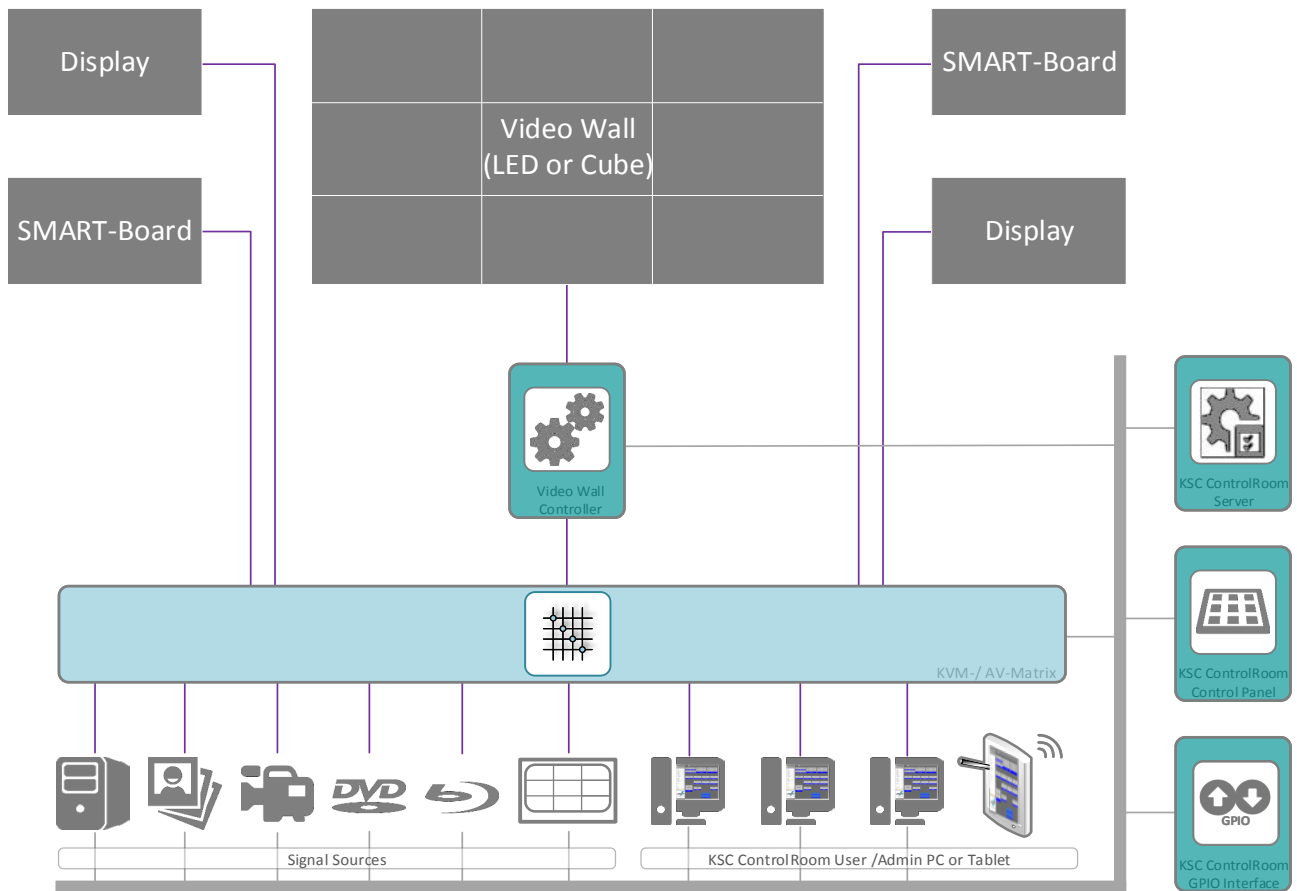
- Manufacturer agnostic control of video walls, projectors and screens
- Intuitive, touch-enabled user interface
- Software and web-based version available
- Individually adaptable views
- Control of audio/video signal matrices
- Control of KVM matrices for multifunctional workspaces
- Controllable room functionalities
- Audio integration and control
- Status feedback
- Event handler
  - Notifications for third party systems
  - Triggering of automated actions
- Resource management
- Roll-based authorization concept
- Reliability for use in 24/7 environments

## Application Areas

- (Industrial) control rooms
- Situation rooms
- Emergency service organizations
- Audio/video production areas
- Master control rooms

# KSC ControlRoom

Control and management system for situation rooms and control rooms



## Options

- Highly available through backup server
- Time-controlled switching/control events
- GPIO controller
- Camera and codec control
- Control of video servers
- Integration in KSC SinAlarm system
- Interface to EIB / KNX bus systems
- Interface to mission control systems
- Network-based LCD HD control panels
- Virtual control panels (tablet computer)

## Technical Data

- Windows Server 2022
- Central SQL database
- Windows 11
- Standard ethernet network
- Supported browsers:  
Chrome, Edge, Safari

## Service

Extensive support for hardware and software through professional service level agreements. Please ask for our customer specific versions, tailored to your needs.

BFE Studio und Medien Systeme GmbH is an international manufacturer and system integrator for the professional media and broadcast solutions based in Germany.

For further information visit us at [www.bfe.tv](http://www.bfe.tv).

Errors and omissions excepted. All specifications are subject to change without notice.

## Reseller



BFE Studio und Medien Systeme GmbH  
An der Fahrt 1 · D-55124 Mainz  
Germany

Phone +49 6131 946 0  
Fax +49 6131 946 111

[info@bfe.tv](mailto:info@bfe.tv)

BFE Studio und Medien Systeme GmbH  
Quellenstraße 2 · A-1100 Vienna  
Austria

Phone +43 1 60828 0  
Fax +43 1 60828 302

[bfe.wien@bfe.at](mailto:bfe.wien@bfe.at)