

# KSC SinAlarm

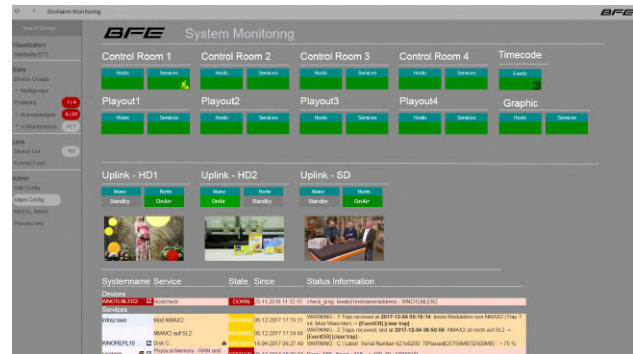
Broadcast Monitoring System



**KSC SinAlarm** is a modular structured management and monitoring system which is fully integrated in KSC product line. BFE adapts the application to the customer-specific system environment and guarantees software support.

## Special features:

- Modular architecture
- Broadcast & media specific monitoring
- Visualized views
- Escalation management
- Integration in KSC product line



**KSC SinAlarm** is able to centrally map and monitor, not only standard IT system environments, but all broadcast / media technology environment resources (e.g. routers, video servers, mixers, audio-visual components, servers). **KSC SinAlarm** helps administrators to detect system problems before a failure occurs. It also eliminates these problems and thus increases the availability of the entire system and the satisfaction levels of users alike.

**KSC SinAlarm** has a flexible notification system with escalation management and quickly informs the administrator of any serious or critical conditions. What is considered "serious" or "critical" can be configured as needed.

Status information of different devices, including system parameters and services, are either actively queried or received (SNMP traps or status messages via API). Data is stored in a database, analyzed correlated if necessary and clearly depicted.

The integration in the KSC product line makes it possible to signal errors in KSC applications and to replace the affected resources via drag and drop and to ensure continuous reliable operation.

The greatest strength of **KSC SinAlarm** is its modular design and the very large number of features that make it a versatile monitoring system.

## Key Features

- Modular architecture
- Database based reports / alarm logging
- Web based user interface
- Extensive filter functions
- Dynamic network layout representation
- Comprehensive, varied views of alarm and system messages
- System environment visualization
- Logging and visualization of performance data
- Event handler
- Error forwarding to third-party systems
- Triggering automatic actions
- Real-time alerts (via e-mail, SMS)
- Escalation management
- Web APIs enable access and presentation of data
- Unlimited scalability
- Decentralized check instances for secure environments
- Integrated in KSC product line

## Options

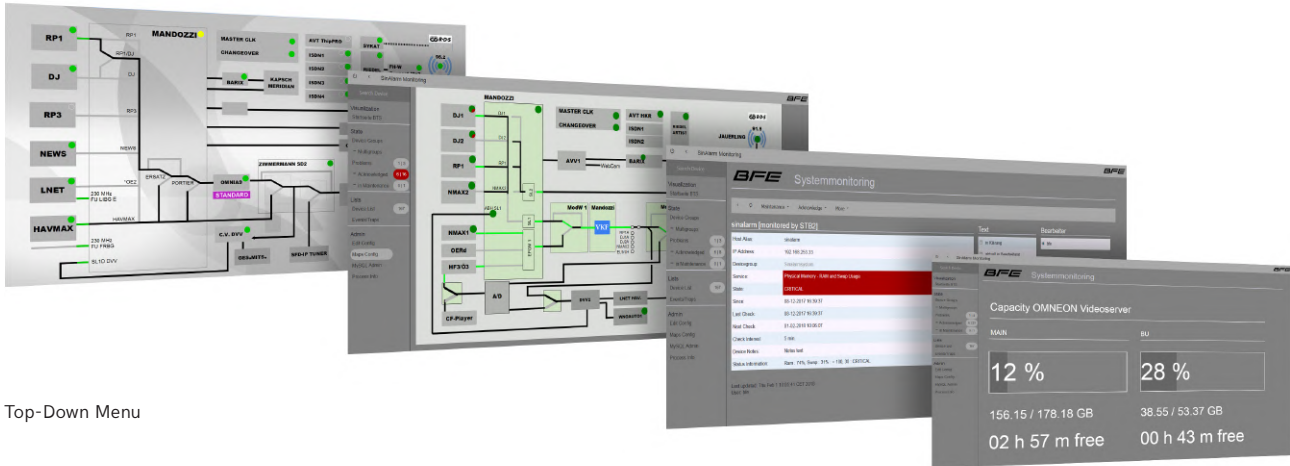
- High availability via cluster option (hot standby server)
- Mobile device support (iPhone, Android)
- Correlated alarm messages: Depiction from management perspective (SLA)

## Application Areas

- Audio/video production areas
- OB vans
- Master control rooms / playout centers
- Network Operations Centers (NOC)
- (Industrial) control rooms
- Situation rooms

# KSC SinAlarm

Broadcast Monitoring System



Top-Down Menu

## Graphical Depiction

The graphical depiction provides clear visualization of the entire system, thereby extending the classical list view. For example, images, network topologies, rack layouts or Visio maps can be depicted more dynamically with real-time status data. The status indicators are displayed in color and are integrated into the graphics.

The configuration of views is entirely web based. Devices and services can be dragged and dropped into the view and linked with status information. This means affected departments are able to configure their own views. Internal knowledge of the monitoring solution is not required for configuration.

The entirety of complex systems is dividable into easy to manage units using the graphical views in **KSC SinAlarm**, allowing the user to receive "top-down" information about the current system status (from the top level view, which provides information about the status of the overall system, to the view of individual devices or service states).

### Possible views:

- Depiction of a logical production area
- Visualization of the signal chain with feedback channel control
- Creation of simple views for end users
- Summary of status information from an entire business unit
- Logical depiction of the network layout, including status and performance information
- Depiction of workflows and system processes
- Visualization of the entire IT environment
- View of all transmission lines with current status
- Status information about links of devices in rack layout
- Fill level indicators of all video memory systems depending on recording format as time value (hh:mm:ss)

## Service

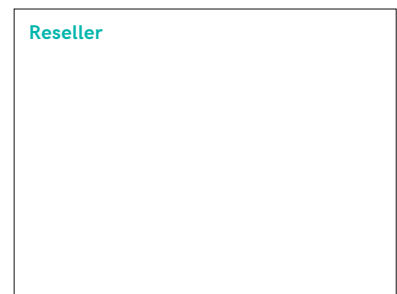
Extensive support for hardware and software through professional service level agreements. Please ask for our customer specific versions, tailored to your needs.

BFE Studio und Medien Systeme GmbH is an international manufacturer and system integrator for the professional media and broadcast solutions based in Germany.

For further information visit us at [www.bfe.tv](http://www.bfe.tv).

Errors and omissions excepted. All specifications are subject to change without notice.

### Reseller



BFE Studio und Medien Systeme GmbH  
An der Fahrt 1 · 55124 Mainz  
Germany

Phone +49 6131 946 0  
Fax +49 6131 946 111

[info@bfe.tv](mailto:info@bfe.tv)

BFE Studio und Medien Systeme GmbH  
Quellenstraße 2 · 1100 Vienna  
Austria

Phone +43 1 60828 0  
Fax +43 1 60828 302

[bfe.wien@bfe.at](mailto:bfe.wien@bfe.at)